

Draft LEP 2009: What does it mean for Artarmon?

by Michelle Sloane, President of the APA, and the APA Committee



Around 80 Artarmon residents met on Wednesday 5 May to discuss their concerns about the proposed rezoning of homes to R3 (3-4 storey) medium density units. Residents voiced their concern about the prospect of gradual dereliction of neighbourhoods ahead of piecemeal redevelopment; further potential erosion of the Artarmon Conservation Area; increased traffic; loss of trees; loss of diversity of housing stock; and elimination of a comparatively affordable entree for families into Artarmon's market for freestanding family homes.

Have you read the **Draft Willoughby Local Environmental Plan 2009**? If you haven't I recommend you do. This document, and the accompanying amendments to the Development Control Plan, will **shape what Artarmon looks like over the next 25 years**.

The **DRAFT LEP 2009** is Council's response to the requirement set by the NSW Department of Planning for all councils to revise their Local Environmental Plans. The draft Plan is a major revision of the Willoughby Local Environmental Plan 1995 and Sydney Regional Environmental

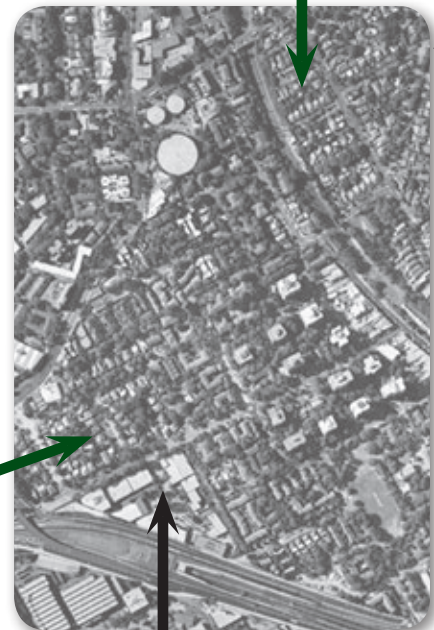
Plan No 5 (Chatswood Town Centre), with wide ranging changes including:

- New zone names and permissible land uses in order to comply with the Department of Planning's Standard Instrument Local Environmental Plan 2006
- Rezoning a number of areas in Willoughby City to increase the number of townhouses and units around shops and public transport
- Reclassification of certain land from community to operational.

Continues on page 3



Should the Cann's Grant "captain streets" be upzoned to R3?



Should the "soldier streets" (French, Kitchener Rimmington, White) and Broughton Rd be upzoned to R3?



Could this amputated remnant of "light industrial" land in George Pl & Broughton Rd be rezoned for more effective use?

Artarmon Progress Association

ABN 77 319 108 019

Established 1914

The APA Committee usually meets on the 4th Tuesday of the month, excluding December.

PO Box 540 Artarmon NSW 1570

sec@artarmonprogress.org.au

Phone 0412 267 828 / Fax 9415 4498

www.artarmonprogress.org.au

COMMITTEE 2009 - 2010

President	Michelle Sloane
Vice President	Glenda Hewitt
Acting Treasurer	Peter Nestor
Secretary	Glenda Hewitt
Federation Reps	Michelle Sloane Peter Egan
Traffic & Parking	Rob Magner Robert Newman
Membership (acting)	Mel Travis
Community & Heritage	Marianne Nestor
Arty Rep	Ross Dickson
Public Information Meetings	Geof Cameron Peter Egan
Website Manager	Robert Newman
Committee Members	Sonia Powell Plamen Bassarov

Artarmon GAZETTE

PO Box 540 Artarmon 1570

The Artarmon Gazette is published quarterly by the Artarmon Progress Association. It is distributed by volunteers, free of charge to Artarmon residents and businesses.

The Artarmon Gazette seeks to inform residents and business people about current local events and issues and provide them with a forum in which to discuss matters of interest and concern.

Written contributions and photographs are welcome. Please submit all non-advertising material to the Editor. Material can be received on disk or via email. Editing may be necessary for considerations of space and layout.

View and opinions expressed in the Artarmon Gazette are not necessarily those of the Artarmon Progress Association or its members. While all care is taken for accuracy, no responsibility can be taken by the Association, the Editor, Designer or Printer.

Editor Sonia Powell
9427 1017
editor@artarmonprogress.org.au

Advertising John Yates
9410 3960
gazette@artarmonprogress.org.au

Distribution Robert Magner
9419 4044

Design/Production Zohannia Pty Ltd
9427 1017
sonia.powell@zohannia.com.au

Cartoons Wendy Bishop
9420 4884

Printing The Printing Department
9439 5000

Advisory Committee Jane Cozens (Sub-editor)
Glenda Hewitt
Rhoda Sexton
Mollie Shelley
Anne Weinert
Eva Wiland

APA Website PimsDesign

FUTURE DATES

Tues 1 Jun 10	Public Information Mtg 8pm
Thu 22 Jul 10	Gazette copy closes
Fri 23 Jul 10	Gazette advertising closes
Tue, 17 Aug 10	Gazette delivery complete
Tue, 24 Aug 10	Public Information Mtg 8pm

© Artarmon Progress Association, 2010.

No material may be reproduced by any means without the permission of the Editor.

Editorial

Mothers' Day - not a celebration that I have traditionally taken very seriously - has become almost inextricably linked with the Artarmon Fair for my children during our years in Artarmon. And so, once again, this Mothers' Day it was a delight to open my children's gifts, lovingly purchased at the Fair the previous day when they had snuck away from Mum to conduct their Secret Children's Business.

Mothers' Day is a wonderful opportunity to celebrate and express our love and thanks to our mother, or to other women who have changed our world for the better. And as I have participated in Mothers' Day celebrations this year within my Christian spiritual tradition, I have found myself inspired anew by the powerful qualities of some of the women of the past.

One of my friends reminded me again of the ancient story of Moses' birth. She prompted me to think about the faith of Moses' mother, the courage of his big sister, and the compassion of Pharaoh's daughter. My friend reminded me to draw on my faith that enables me to keep going and to keep hoping - to be assured of love and to look forward to tomorrow. She reminded me to act with courage - to step out, to speak up, to stand up for what I believe. And she called me to keep acting with compassion, to look beyond myself to what it is that others need. Another friend reminded me of Lydia, the prosperous, dynamic and open-minded merchant who was the first person in Europe to be converted to the Christian faith. Lydia was a leader, a community-builder, a woman who practised hospitality and welcomed the stranger.

It's good for me to receive these inspiring reminders. Indeed, I desperately need them as, like many of the families in our Artarmon community, I attempt to respond constructively to proposed rezoning of our homes and significant changes in the fabric of our built environment. If "upzoning" goes ahead, will we want to stay where we are, or would we prefer to sell? How quickly? What will happen to our neighbours and our neighbourhoods? To our dwelling places? To our financial affairs? If our neighbourhood is to change irrevocably, will there be enough development potential to enable us to afford to move somewhere else? Or will we be stuck in the midst of suburban decay on the one hand, or a construction zone on the other? Might it even be good?

As we work through these issues as a community, I am grateful for the inspiring women and men from many spiritual backgrounds that I have come to know through the APA. Thanks, guys, for your optimism, courage and altruism, your hospitality and openness to others, your sense of fun, your eyes on the big picture, and your hard work! May all of us in Artarmon effectively talk through the fears and the opportunities that the draft plans bring us, together as a community.

Sonia Powell

editor@artarmonprogress.org.au

Public Information Meeting

Tuesday 1 June

The Draft Willoughby Local Environmental Plan 2009: What does it mean for Artarmon?

Special Guest

Mr Greg Woodhams

Environmental Services Director Willoughby City Council

at the Artarmon Bowling Club, Burra Road at 8pm

Drinks will be available from the Bar. For further information please contact Michelle Sloane 0412 267 828

Draft LEP 2009 & President's Message

Continued from page 1

The changes proposed in the Draft LEP 2009 have come about as a result of a number of state (and national) pressures including the need to:

- Increase residential housing around public transport
- Increase supply of affordable housing
- Enhance/create employment opportunities.

The Draft LEP has an impact on every dwelling in the Willoughby Local Government Area. We urge you to read the Draft LEP and to think about what impacts may occur as a result of what is proposed.

Formal submissions close on **20 May 2010**. If however, you miss this deadline, you can contact Council requesting an extension to **10 June, 2010**.

Over the last few weeks the APA has been reviewing all the Draft LEP documentation. We have met with a number of residents and attended a public meeting organised by a group of concerned residents whose streets are being rezoned R3 medium density. What has emerged quite clearly from these discussions is the following:

- Any changes anywhere in Artarmon must be sympathetic to the streetscape, consider environmental impact and community amenity and not place additional pressure on infrastructure or traffic volumes and flow throughout the suburb.

- The importance of the Heritage and Conservation Area and the need to retain its character by treating it as a whole and not a collection of individual properties of varying worth. The one storey streetscape applies to the whole Conservation Area and not separately to individual residences. To that end any proposed changes in the Draft LEP must not weaken current development controls on what is acceptable and unacceptable in this unique part of Artarmon.

The Progress Association is not opposed to development – but what we want is **appropriate development, appropriately placed**. We are opposed to the gradual dereliction of neighbourhoods ahead of piecemeal redevelopment; any further erosion of the Conservation Area; increased traffic; loss of trees; further pressure on ageing infrastructure and loss of housing stock diversity.

The APA considers that if rezoning for increased housing density is necessary, then a “master plan” approach to development is appropriate. This would assist in avoiding the degradation of an area that occurs at times where properties have been allowed to fall into disrepair pending development. It also allows for planned and sympathetic streetscapes, closure of multiple street entries, appropriate consideration of traffic flows within the precinct and a blend with the adjoining areas.

The APA further considers the light industrial land in George Place and south Broughton Road separated from the Artarmon Industrial Area when the Gore Hill Freeway

was constructed, as potentially a superior alternative location for rezoning to medium or high density residential that deserves serious consideration.

Finally, if rezoning does proceed and residents are disrupted then they must be appropriately compensated. The APA strongly believes that no resident should be disadvantaged as a result of what is proposed.

The APA will be actively pursuing all these issues with Council.

Mr Greg Woodhams, Environmental Services Director will be our guest at the next APA Public Information Meeting on Tues 1 June at the Artarmon Bowling Club, Burra Rd. I urge you to attend this meeting to hear directly from Greg what is proposed and to ask questions.

What makes Artarmon such a great place to live could be seen by all on the day of our Community Fair. The many faces of Artarmon came together to make it a fabulous day! Our most sincere thanks to Willoughby City Council for all their support and of course our Local Business Heroes. Without this support, the Fair would not be possible. And finally thanks to all of you who came along and enjoyed the day!



Michelle Sloane,
APA President



WILLOUGHBY CITY COUNCIL

On Call Clean Up Service

Willoughby City Council offers residents a flexible pre-paid service that allows you to book an extra pick-up when it suits you.

For just \$44 (including GST), you can have 2m³ (approximately one box trailer load) of rubbish collected from your home.

To book and pay for your service, and for terms and conditions, visit the Help and Service Centre, Level 4, 31 Victor Street Chatswood or for an application form visit www.willoughby.nsw.gov.au



Dumping. It's dumb. It's dumb because you're trashing where you live.

Artarmon@Council

Sportsground allocations for winter have been made. Artarmon Reserve Oval will be used by Northern Suburbs Touch Association, Chatswood High School, Artarmon Public School and the Morning Cricket Association.

Free wireless internet access is available at **Artarmon library**.

At February's Council meeting there was a motion to adopt a draft policy to establish **community gardens** as a means of developing meaningful relationships within the community to strengthen social cohesion and demonstrate leadership in sustainable gardening and food production.

The **Community Information** team at Chatswood library provides information and referral for activities within Willoughby City and the surrounding area.

The online Community Information Database provides accurate and up-to-date details of services, activities and organisations. Every month the *What's On In Willoughby* brochure is published with details of Council-organised events. Copies are available at Chatswood Library and at Council's Help and Service Centre.

To speak to a member of the Community information team, ask at the Chatswood Library Information Desk, phone 9777 7900 or email library@willoughby.nsw.gov.au.

More than 500 fridges from the Willoughby

local government area have been collected in the **Fridge Buyback program**. It's estimated this saves approximately 4000 tonnes of greenhouse gas emissions. Households using two fridges can have old, working second fridges collected as part of the scheme. Phone 1800 708 401 or visit the Fridge Buyback website at www.fridgebuyback.com.au. The fridges collected are professionally degassed and the metals are recycled.

Council's new **free shuttle bus service "The Loop"** started Tuesday 27 April. The service provides access to a number of key destinations across the Willoughby Local Government Area (LGA) and aims to assist in reducing travel by private vehicles.

The Loop runs from 10.30am to 6pm, Monday to Friday servicing a different area of the Willoughby LGA each day. The service will run:

Mondays: Artarmon to Naremburn

Tuesdays: Northbridge to Castlecrag and Willoughby East

Wednesdays: Chatswood to Chatswood West

Thursdays: Northbridge to Castle Cove via Middle Cove

Fridays: Chatswood to Northbridge

The service is free and residents can jump on the bus anywhere along the route. The Loop operates every 45 minutes for the Monday, Tuesday and Thursday services and every 60 minutes on Wednesday and Friday.

THANK YOU



"Noah's Ark Toy Library for Children with Special Needs would like to thank the Artarmon Progress Association for sponsoring our stall at the Fair, and also to thank everyone who kindly donated goods for our stall, purchased our goods and our raffle tickets. Your ongoing support helps us to keep providing our service to children with special needs and their families."

Winners in the APA Member drawer at the Fair

- Michael and Jan Byrnes - Hair products (donated by Hair on Wilkes)
- Danielle Hawker - Basket of Citrus Resources Eco-Friendly cleaning products (donated by Citrus Resources)
- Mr Arshad - \$200 gift voucher for Home HQ (donated by Home HQ)
- Mary Crock - Family pass to High School Musical 2 at the Zenith Centre (donated by Chatswood Musical Society)
- Dale McKay - HP Photosmart A626 compact Photo printer (donated by Glenda Hewitt)
- Joanna Joyce - Family Photography package valued at \$490 (donated by Vivid Eye: portraits)

"What's on at the Freeway"



Monday to Thursday
HAPPY HOUR
4pm to 5pm
Courtesy Bus available



Tuesdays
Texas Poker
Register at 6pm



Fridays
FREE Office Party
from 5pm
(min 6 people)



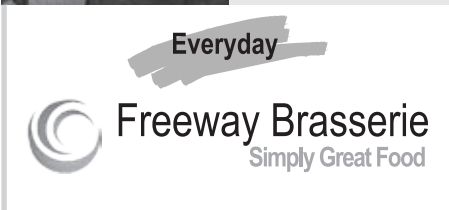
Mondays
MEMBERS' DRAW
Win up to \$3,000



Thursdays
POOL COMP
Register at 7.30pm



Sundays
\$10 Steak, Fries & a Republic Beer 12-2pm
TANGO 4pm to 6pm



Wednesdays
Fame Trivia
Register at 7.30pm



Saturdays
TAB & ALL SPORTS
on 20 Big Screens



The Freeway Hotel 115 Reserve Rd (Cnr Gore Hill Freeway) Artarmon | www.freewayhotel.com.au | 9437 0000

20 years of physiotherapy in Artarmon

Artarmon Physiotherapy Centre has been owned by **Ann Liebert** for the past 20 years. Her team of physiotherapists use a variety of treatments including low-level laser, electrotherapy, ultrasound, manual therapy and traction.

The latest addition to the practice is the Low Power Swedish Laser for treating neck pain and headaches. Ann travelled to Bergen in 2009 to study the optimal use of this laser therapy.

The team of physiotherapists at Artarmon Physiotherapy focus on providing quality individual assessments and treatments specific to the condition of clients. In addition to the range of treatments available they also use real time ultrasound which enables patients to view their muscles while they perform core stability exercises.

Some of Ann's foundation patients are now in their eighties and nineties and are continuing to participate in the many local activities on offer. They remain independent and well and are proactive in their approach to managing their health.

"By seeking our treatment intervention early with laser, manual therapy and preventative exercises such as core strengthening, people of all ages are able to remain active and minimise their symptoms," said Ann.

"When musculoskeletal conditions are managed, our Artarmon patients can exercise and have improved general health and fitness." ■



Photos: Above - Ann Liebert during her visit to Bergen, Norway last year to study optimal therapeutic use of the new low power Swedish laser.

Below - Demonstrating the laser in use at Ann's Artarmon Physiotherapy Centre practice.

Quiz No 17:

Artarmon's churches

1. When was the Artarmon-Chatswood South Uniting Church built?
2. What is the heartbreaking story about this camellia tree in the church cemetery?
3. When was St Basil's built?
4. There was a Methodist Church in Hanover Street, Artarmon from 1910 to 1960. Why was Hanover Street re-named Dickson Avenue?

Answers on page 10

Compiled by Marianne Nestor from Grace Warner's 'Artarmon Past, Present and Future'.

PHYSIOTHERAPY 20 years



ANN LIEBERT
JACKIE WALKER
MIRIAM MOTH
Physiotherapists

Artarmon Physiotherapy Centre and owner Ann Liebert have recently celebrated 20 years of practice in Artarmon. Our team of physiotherapists focus on providing quality patient management including:

- *Low level laser*
- *Electrotherapy*
- *Real time ultrasound*
- *Manual therapy*
- *Manipulation*
- *Traction*
- *Core stability exercises*

The latest addition to our practice is a New Generation **Low Power Laser** from Sweden. The laser use was recently demonstrated on 'Today Tonight' and 'A Current Affair' by Australian GP, Dr Roberta Chow, for treating chronic neck pain and headaches. This was a follow up to her paper published in *The Lancet* in 2009, by Dr Chow and her co-author Professor Jan Bjordal, Professor of Physiotherapy at Bergen University. Ann travelled to Sweden and Norway in 2009 to study the optimal use of this laser therapy.

SUITE 6
110 HAMPDEN ROAD
ARTARMON
PH: 9419 3404
FAX: 9419 2880

Artarmon Public School celebrates its Centenary - A brief history 1910 - 2010

by Margot McKay

WW1 and earlier: The possibility of opening a public school at Artarmon was first raised in 1907. It took three years to get approval from the Department of Education, to purchase the land and build the two-room school. Artarmon was growing rapidly and it was thought that the many Artarmon children travelling by train to Chatswood were at risk from accidents.



The school as it was in 1910

The school opened in October 1910 with Miss Eliza Cowan as Mistress, one assistant (Miss Hancock) and a class of 66 children. At this stage the school had an infants' department only. Soon after, the land between the original school site on McMillan Road and Barton Road was sold to the department by Mr W Cleland for £900.

In March 1917 the school completed an extension: an upper storey of two rooms was built over the existing building. Artarmon became a full primary school. That same year John Pugh was appointed first permanent headmaster and the first P & C was formed. By 1918 the average attendance was 272 pupils. John Pugh was then succeeded by Andrew Garden and shortly afterwards by Jonathon Machin. By September 1919 there was a staff of 8 teachers and 462 pupils.

Between the Wars: In the early days, overcrowding became a problem and pupils were often housed in weather sheds. The sheds were soon enclosed to make classrooms but enrolments were increasing by about ten pupils a week thanks in part to the popularity of Mr Machin. By 1920, portable classrooms were also introduced to cope with the student increase.

In 1924, four new classrooms were built fronting McMillan Road. Jonathon Machin was a sick man by now but worked until his death in August 1925. Because of his popularity, a bell tower was erected in his memory.

Colin Moody succeeded Jonathon Machin and by May 1927 the enrolment was at 786 pupils. Overcrowding was once again an issue. Relief came in 1928 with a new building on the Abbott Road site at a cost of £9108. The school was then divided into three

departments; the boys in the new building and the girls and infants remaining in the old one.

George Ridley was headmaster from 1928 to 1932 and then Kenneth Finch until January 1934.

By 1935 George McCartney was the headmaster and at the beginning of 1936 Artarmon became the third school in NSW (after Woollahra and Erskineville) to have a special class for gifted children. This was the start of the OC (opportunity class) at Artarmon Public School.

William Rannard was the headmaster over the war years and then Harold Mathews took over in January 1946.

Post WW2: After the war, the first flute and recorder bands were formed but only the boys were allowed into the flute band. From these simple beginnings Artarmon is still recognised as a leader in music today.

The Oslo Canteen, run by Kay Grant, became operational in 1947. Mrs Grant served the children lunches continuously for 20 years, retiring in 1967. Her policy was to provide a healthy lunch to the children. Brown bread with healthy fillings and fruit was the norm although many children remember the chocolate filling in crusts (butter, sugar, cocoa). In 1951 some parents requested the chocolate filling be taken off the menu, but it continued well after that: the pupils won!

Craftsmen Office Interiors NSW Pty Ltd

The Enterprise Centre
1/78 Reserve Road
Artarmon NSW 2064
ph: 02 9901 2600
fax: 02 9906 4192

website: www.craftsmeninteriors.com.au

accounts/admin: admin@craftsmeninteriors.com.au



history

Craftsmen Office Interiors NSW Pty Ltd moved into the Artarmon area (Cleg Street) in 1992. We made the choice of Artarmon due to the close proximity to the city and north shore, as well as the Artarmon area's great village, public transport, parks, plenty of trees and great plans for the suburb's future. We purchased a property in Reserve Road (The Enterprise Centre) in 2000, in one of the new industrial/commercial estates that have been established in Artarmon and have brought a wide range of businesses to the area. The Progress Association, local members and businesses are contributing greatly to Artarmon and we are proud to be part of this.

company

Craftsmen Office Interiors NSW Pty Ltd was established in 1990, originally from Melbourne. We specialise in Commercial Office Interiors, construction and project management; we have a large experienced team of 25 people and a wide base of customers. We service and maintain numerous businesses in Artarmon, and also utilise the services of businesses in Artarmon.

If you require quotations or ideas on your existing office fit-outs please contact one of the persons below.

contact details

Craig Learmonth
0418 673 401
craig@craftsmeninteriors.com.au

Karl Moffitt
0412 977 426
karlm@craftsmeninteriors.com.au

Paul Rowe
0418 976 779
paul@craftsmeninteriors.com.au



The school as it is today

Also in 1947, and under the leadership of Harold Mathews, the school was classified as a School for Special Purposes and Experiments in Education. The school taught, for example, spelling with and without a typewriter. The school also introduced mechanical aids such as the Tachistoscope and Reading Rate Controllers.

The 60s: In 1960, Jubilee Celebrations were in full swing and the Jubilee Assembly Hall was built. Many children helped fund the project by holding backyard fetes, hobby exhibitions, stamp and coin shows and auctions. Class magazines were written, typed, edited and bound by pupils and sold. The hall was completed in 1962 and officially opened in 1964. In 1967 a physical education program was introduced and some 60 fathers worked for two weekends to install equipment. After 22 years as Headmaster Harold Mathews retired in 1968 and John Nicholson replaced him.

The 70s: From 1971 a new assessment scheme to replace exams was introduced and children's work was evaluated by the class teacher as each term progressed. The 70s also saw three choirs in training as well as the flute and drum bands and junior and senior recorder groups plus a small group of violinists. In sports there were two softball, two cricket, two netball and two rugby union teams. 1972 saw two big changes: Harold Nicholson introduced the teaching of English as a second language and the Ladies' Auxiliary donated a language machine to assist. 1978 also saw big changes: a language teacher for non-English speakers was appointed and Elizabeth Walker was appointed as the first woman president of the P & C. In 1979 after ten and a half

years Harold Nicholson retired and Lance Richardson was appointed as his successor.

The 80s: In 1985 Artarmon celebrated its first 75 years and a history of the school was published.

2010: Artarmon Public School now has 760 students, a smaller number than in 1927. We still have our choirs which include Kameraigal Choir (Years 5/6), Cowan Choir (Years 3/4) and the Year 2 Choir. Our bands comprise a Senior Band, Concert Band, Junior Band, Training Band, Jazz Band 1 and Jazz Band 2. The school sporting teams compete in soccer, netball, otag and Aussie Rules. In addition, the school also has a string group, guitar group and debating teams. This year the school is growing again with a new two storey building that will house a new library and three new classrooms. The old library which is currently located in the original building will be refurbished and made into the administration offices.

*The school will be holding a **Centenary Celebration event on 23 October, 2010.***

If you would like further details please contact the school at artarmon-p.school@det.nsw.edu.au or 9411 1950 or see the school website www.artarmon-p.schools.nsw.edu.au

The school is also in the process of documenting the last 25 years of its history. If you have any memories, photos or memorabilia you would like to share, please contact Margot McKay at margot@whichhue.com.au or 9413 1058.



APS Prefects (above) and house captains joined 7000 other primary school students for an inspirational day at the National Young Leaders' Conference in March this year

Exciting activities leading up to Artarmon Public School's 100 year celebrations

by Jane Cozens

The school is gearing up for its centenary and a different theme has been assigned to each school term.

Term 1 – Multicultural. The highlight was the successful Multicultural Festival on Sunday 27 February which proved a great way of welcoming new families and connecting with the culturally diverse families represented at the school.



Multicultural day 2010

Term 2 - Academic. To celebrate the academic history of the school and to stimulate creative, innovative and academic acumen, primary students will be attending The Artarmon Academy for eight weeks. A wide variety of courses are being offered, some examples being ethnic percussion, Artarmon history, movie making, Shakespeare, ancient Egypt, geology, fishing and the history of food, of which students can elect two. They will gain experience working with students and teachers other than their usual and all courses are designed to stimulate, challenge and introduce students to new areas of learning while enhancing thinking skills.

Term 3 – History. Students will be looking at the history of the school and the suburb, one decade per week for ten weeks.

Term 4 - Centenary, with the big celebrations happening on Saturday 23 October 2010. ■

Willoughby Village

Friendly, recently renovated village for over 55s
Secure, quality independent living units
Peaceful location overlooking Muston Park
Close to Chatswood amenities - 30m to bus stop
Adjacent accredited hostel for assisted living
Recession-proof accommodation

Studio, 1br & 2br units and townhouses

Units to suit singles and couples with varying needs
Studio & 1br \$129,000 - Pensioner rental assistance available
2 br \$500,000 - Annual refund after 2 years residency

36 Douglas Avenue Chatswood

9417 3328 | www.willoughbyvillage.com.au

Willoughby Retirement Community Association A not-for-profit organisation ACN 001 838 777



WHICH HUE

Colour Consulting and
Interior Decorating
in Artarmon

think
outside
square

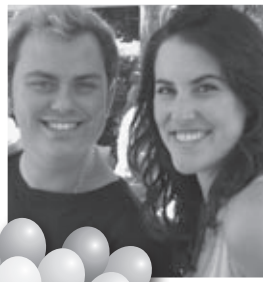
contact Margot McKay

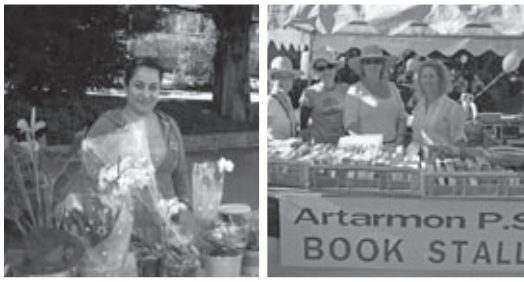
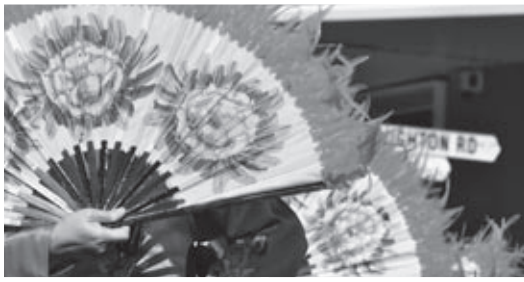
† 9413 1058 m 0402 855 299

www.whichhue.com.au



Artarmon FAIR





Artarmon
PROGRESS ASSOCIATION

thanks our community's 2010
Local Business Heroes

Platinum



CommonwealthBank



Gold



Silver



www.ArtarmonFineDental.com

Artarmon Vision Specialists
Optometrist • spectacles • sunglasses

Stuart Schipp - Opt. Dispenser
Roland Tan - B.Optom. UNSW

122 Hampden Rd, Artarmon

Mon-Fri: 9am-6pm
Saturday: 9am-12.30pm
Closed Wednesdays

9412 3757

Free Eye exams
(medicare conditions apply)



3A Broughton Road, Artarmon
www.artarmonskinfitness.com.au
telephone 9904 6090

- facials
- waxing
- massage
- body wraps
- tinting
- spray tan
- hands & feet
- botox (on request)



Highly qualified therapists - **AABTh** accredited



Book Review: All Rise Please

by Anne Weinert

'All Rise Please', a novel by Mollie Shelley, is based on the life of her father, a country magistrate in NSW in the early 1900s.

Will Montgomery, the book's main character, joins the workforce at sixteen, but aspires to be a magistrate. Will marries Catherine, and together they move from town to town as Will completes his studies and gains roles of increasing responsibility in the New South Wales Justice Department (local courts) system.

One of the most interesting parts of the book is its chronicling of the towns of Western New South Wales during the early 1900s – from the social mores, which see Catherine having to negotiate the social structure of each new town they move to, to the historical details of the early days of towns like Leeton, Burley Griffin-planned as part of the new Murrumbidgee Irrigation Area, with its streets laid out in circles

like Canberra, but numbered like Manhattan – making it rather difficult to find your new house at the end of a long dusty drive along unmade roads in 1930!

The story of Will's life unfolds through the eyes of Catherine, or 'Nan' as her family now call her, as she recounts it to Ghita, a social worker married to their fictional grandson Kingsley, a Sydney city magistrate. Ghita is keen to record Nan's story, and so we see her family's city experiences being compared with Nan's reminiscences of lives lived during flood, drought, depression and war.

Those who know Mollie Shelley will be able to see behind the

characters of the book and recognise events or traits which have clearly influenced Mollie's life – such as her love of music and of gardening.

The structure of the book, while based on fact, allows Mollie to take licence and add historical and personal details to keep the reader's interest.

I thoroughly enjoyed it, and congratulate Mollie on persevering to bring the story to a wider audience.

'All Rise Please' is currently available from Lindfield Bookshop, Angus and Robertson Chatswood Chase and Westfield; Dymocks Lane Cove; and Cammeray Square Books.



Quiz No 17 Answers

Questions on page 5

1. In 1871, although it really began as a Bush Mission station and Sabbath school in 1862.
2. In summary, in 1878, Hugh Bryson, age 19, was riding to Willoughby to visit his fiancée. He was thrown from his horse and died. He wore a camellia bloom in his buttonhole. His fiancée planted the camellia in the soil above his coffin and it still survives today. This plaque in the cemetery relates the story.
3. The foundation stone was laid in June 1912 and services commenced in December 1912. Between June and December 1912 services were held under a very large gum tree in the grounds.
4. The name was changed during WW1. I am presuming it was because of anti-German sentiment in the community.

Vale, Pieter Cordia OAM

by Barry Thompson

Pieter passed away recently after a short illness. He had celebrated his 90th birthday in January. He and wife Maylean were 48-year residents of Artarmon. They celebrated their diamond wedding anniversary in 2004, prior to Maylean's death in 2006. Cordia Way, the shared path that runs between Artarmon Reserve and Weedon Rd and passes their property, was named to commemorate their contribution to our city through the establishment of COWPA (City of Willoughby Pedestrians' Association) and of the Artarmon network of Neighbourhood Watch.

Pieter, born in Borneo of Dutch parents, joined the Dutch Navy and ended his maritime career as a pilot on Sydney Harbour. He was heavily involved in community issues from that time. Among his interests outside Artarmon was the heritage of the Prince Henry hospital at Little Bay. He, again with Maylean, was instrumental in setting up a Nurses and Medical Museum there. That work led to them being awarded the OAM in 2005. It was fitting that Pieter's funeral service was held in the chapel on the former hospital site at Little Bay.

We revisit Artarmon Reserve by Mollie Shelley

It is now almost ten years since I first wrote about walking in the Reserve. Much work had already been done by Council and Volunteer Bush Regenerators in restoring what had become a weed infestation with thickets of lantana and convolvulus. The work has continued and progress is there for all to see. First let's do a recap on the basic conditions.

The soils are mostly sandstone but there are pockets of clay washed down into the gully from the Artarmon area. The original forest from which settlers harvested their timber was mainly Blue Gum (*Eucalyptus saligna*) and Blackbutt (*Eucalyptus pilularis*). The Blue Gum is a tall straight tree with a heavy crown of narrow pointed leaves which are paler underneath and a stocking of rough, grey fibrous bark above which the limbs are smooth blue-green. Blackbutts are very large straight trees with fluffy branches of leaves at the top. The rough, grey-brown stringy bark covers much of the trunk. Above that the trunk and branches are smooth and creamy-yellow. The Sydney Red Gum (*Angophora costata*) also known as the Smooth-barked Apple or Rusty Gum, is found mostly on sandstone soils. It is easy to identify because it earns its name from its rust-red trunk after it has shed its grey bark around Christmas time. It's the tree you'll see growing over sandstone rocks around the harbour. It often has wrinkles or folds under its armpits. Unlike eucalypts whose leaves are arranged alternately, angophoras leaves are arranged opposite each other. The



Cartoon by Wendy Bishop

dark red gum often seen staining their trunks was once used to stop bleeding.

Cordia Way, the shared pedestrian and bicycle path leading down to the Reserve, was declared open in March 2002 by Mayor Pat Reilly. It was named in honour of Pieter and Maylean Cordia. Their efforts were one of the main forces behind the successful development of the path. They will live on in our memories because the bicycle path is much used by both adults and children. A recent walk along it revealed new plantings of about a dozen *Prostanthera* or Mint Bush along a fence line in one section and a number of *Callistemon* or Bottle brush in another section.

One of my great pleasures is the swathe of maidenhair fern growing down near the little bridge and, if one walks along the track on the north side of the creek until it comes to a halt at the bamboo grove, one is now able to see those wonderful rock ledges in the creek and the grove of slender tree ferns that have colonised this part of it.

Weeds and how to deal sensitively with garden escapees are always a challenge for bush regenerators. The cooperation of people whose gardens back onto the Reserve is both welcome and important. That part of the Reserve has improved enormously because of the awareness of householders and we are all grateful for their efforts. ■

PERMACULTURE NORTH meets 3rd Monday evening each month in Lindfield. Contact 1300 887 145 or info@permaculturenorth.org.au.

The Artarmon Sustainability Street Group

SUSTAINABILITY ST.
IT'S A VILLAGE OUT THERE

has suspended its regular Thursday monthly meetings following the successful completion of the Sustainable Living Collection library project.

The group is now holding regular monthly working bees in the Sustainable Garden outside the Artarmon Library. Future working bees will be on Sunday **23 May, 27 June, 25 July 29 August and 26 September**. There will be plenty of time for sustainable discussion as we work! Please join us if you would like to help. You can also email stuartsexton@gmail.com for any sustainability issues and questions.

WWW.
ClimateCleverShop
.com.au

Save money, time and the environment with the online ClimateClever Shop.

Purchase discounted:

- Solar hot water systems
- Heat pumps
- Solar photovoltaic (PV) systems
- Rainwater tanks

Visit the website and start saving today!

Brought to you by:











Councillors' feedback...feedback...feedback



Barry Thompson

Council 'modernisation': You might have seen an early-April article in the local 'newspaper' about changes to council boundaries. Mayors Burman of Hornsby and McCaffrey of North Sydney were airing

their views on amalgamations. Cllr Fogarty of Willoughby gave his view in a letter to the same paper the next week. The matter was further discussed at the May meeting of NSROC. The issue is contentious. It reared its head last year when the Association of Consulting Engineers advocated the formation of 11 super-councils around Sydney. Their view was that fewer stronger voices might attract more attention from other levels of government at the same time as marshalling greater skills for planning and resource management at the local level. The NSW LGSA (Local Government and Shires Association), under President McCaffrey, responded by proposing a committee to consider 'modernisation of local government'. Willoughby Council subsequently decided to run a Councillor workshop to consider the impacts of 'modernisation'. That workshop is scheduled for May 18.

The next State government may find the idea of amalgamations advantageous locally, across Sydney and in regional areas. I will leave it to you to imagine how the North Shore might be reorganised. Outside Sydney, many shire councils have been declared economic basket cases – and the future prospects of many towns are

at stake. 'Modernisation' might involve some new variations of old ideas, such as greater collaboration among autonomous Councils. ROCs (Regional Organisations of Councils) have been in existence for some years with what I regard as very mixed results, despite strong support of the local NSROC by Willoughby. Following the 2011 State elections, Willoughby Council will need to be on full alert to ensure it is not disadvantaged in any upcoming bunfight and to assert its position as a well-run, transparent, regional centre intent on delivering worthwhile outcomes for its residents and other stakeholders. The pace of change on this issue would probably be timed to force actions at the next local government elections in September 2012. As I have said previously in relation to other issues, watch this space!

Heritage Wins: As part of Heritage Week, Council recently presented awards for built heritage outcomes in our city over the past two years. Entries for the awards were again of a very high standard. I am pleased to inform that two of the winners were local, one in Artarmon and one in Naremburn. Artarmon's commendation came for the adaptive reuse of the old 'council depot' building on Reserve Rd to become 'Home HQ', our new bulky goods shopping precinct. Naremburn's award came for the extensions to St Cuthbert's church –wherein the church was literally 'turned around'. Both projects were worthy winners and will be major assets for our area in the future. I congratulate all involved for the innovation, resource efficiency and flair of their work.

barry.thompson@willoughby.nsw.gov.au
9412 1596 (phone/fax).



Kate Lamb

Council has two important documents on exhibition right now. The **4 Year Delivery Program and Operational Plan & Budget for 2010–11** provides a better integrated approach

to strategic planning along with the current year's budgeted activity. It is nonetheless a complex document reflecting the nature of our responsibilities. Feedback closed on 21 May and details are on our website.

Every property owner in the city will have received a brochure advising of the exhibition of our **Draft Willoughby Local Environmental Plan 2009 and Amendments to Willoughby Development Control Plan**. It has been prepared as required by the NSW Government so as to bring standard controls and terminology into use throughout NSW and because of that, all properties are affected. In most cases this simply means a name change for your property's zoning (e.g Residential "2a" is now called "R2"). We have been required to provide for increased residential density and therefore some areas are proposed for 'upzoning'. Council's practice has been to select those areas closer to public transport, with the exception being Conservation Areas such as Artarmon. More details can be found on the Council website. at www.willoughby.nsw.gov.au.

Join our Restore* rewards club and start earning valuable discount points today!

Nick Logan Pharmacist Advice has a new loyalty program through which you can earn valuable points every time you shop with us and convert them into store discounts for future purchases.

How does Restore work? Each time you shop you earn one Restore point for each dollar you spend (excluding prescription and S3 items). Once you earn 100 points you can convert your Restore points into a discount voucher worth \$5. The more you shop the more points you earn and the more you save.

How do I join? Simply fill in the application form in the pharmacy, detach the Restore card and start earning points immediately.

To earn Restore points: Make sure you show your card during your purchases to earn Restore points. Your card must be scanned during the transaction to ensure your points are recorded.

To redeem your discount: Ask our staff to check your points balance before your transaction to see if you are eligible for a discount (100 points or more). You can use your discount on that purchase or allow your points to accumulate and redeem when you are ready.

You deserve healthy rewards! Not only do you earn Restore Rewards points every time you shop, keep an eye out for special member-only benefits.



Nick Logan

Pharmacist Advice



We'll sit with you so you'll understand!

96 Hampden Road, Artarmon

Phone 94196880 Fax 94196888

Email nloganpa@bigpond.net.au

Web www.pharmacistadvice.com.au

Councillors' feedback...feedback...feedback

Before the last election, many people I spoke to seemed aware of the need to reduce private car use but said that because public transport was so poor it was hard to get about any other way. Others who didn't have ready or regular access to a car had even fewer options but have all the same needs – to shop, to visit doctors and to socialise and pursue interests. It is with great pleasure then that I can report that from 27 April and supported by our special e.restore rate, Council is providing a **free shuttle bus** on a limited number of local transport routes, in off peak hours. For residents of Artarmon, the Monday Loop connects Artarmon, St Leonards and all parts of Naremburn. Starting at 10.30 am there will be a bus leaving the from Hampden Rd shops (west side of the station) every 45 minutes with the last one leaving at 5.15 pm. The Friday Loop connects Chatswood, Artarmon and Northbridge, via the Leisure Centre. The first one will leave from the Dougherty Centre at 10.30 am and every hour thereafter till the 5.30 - which is one way only, to Northbridge. You can flag the shuttle down in any safe area other than a "no stopping" zone! This exciting development is a trial and we expect to be refining aspects of the service, depending on the level of patronage so please – help spread the word! You can pick up a Loop brochure at Council's offices or the Library.

It is with great sadness that I mark the passing of Captain Pieter Cordia, husband of the late Maylean (nee Heffron) and much valued resident of Artarmon. I loved them both and I like to think of them as reunited now.

Visit my blog - www.katelamb.blogspot.com ■



Stuart Coppock

Council has received a report for a proposal for a **solar power generation farm** on the Albert Avenue car park at Chatswood. It is proposed that the power generated will be around 350kw with possibilities

for expansion. The power will be distributed via private wire to council properties. It could supply up to 20% of the energy needs of the premises to which the power is to be supplied.

This part of Council needs to plan for imminent increase in energy prices. The recent Australian Energy Regulator Draft Determination proposes a network tariff increase of up to 172% for domestic customers. Small business on low voltage should expect an increase of 145% on network charge and Council should expect a network distribution charge increase of 150% for street lighting.

Council's **Asset Management Plan** is one of several plans now required by the State Government pursuant to their Integrated Planning and Reporting requirements. This report will be a good snap shot of the financial health of Council. The financial data will mean that a plan to allocate an appropriate sum of money to maintain infrastructure will be undertaken rather than have a sum in the accounts which was little more than a book entry. While this may seem somewhat abstract, it is a significant step forward for the financial well being of Councils.

The construction of **The Concourse** is on track and within budget as advised to Council. An additional borrowing has been advised to Councillors by the Council's GM due to shortfall in the funding plan. The borrowing is for a further \$25M that will bring the borrowings of the project costs to a level of 46%. The GM has also advised Councillors that it is expected \$20M of this borrowing will be received when certain DAs are approved in the Chatswood CBD.

Most of the difficult **Burley Griffin Incinerator** structural work is completed and the focus is now on the final finishes to the building. The lift shaft concrete works have now been completed and the excavation has been back filled. Works are now about to focus on the internal fit out (bathrooms), relocation of furnace door, new windows, repairing of guttering and flashings, installation and commissioning of lift and all of the essential services.

Council's **Audit Committee**, on which I am the Councillor representative, had its first meeting on 21 April. A work plan has been adopted and, significantly, an Internal Auditor has been appointed to assist with governance. This Internal Auditor is a part time auditor to the group of 6 councils in this Internal Audit, and with so many Councils in the Scheme only a small number of hours will be left for actual audit work. The Committee is aware of this issue and it will be a matter of review and report. The Committee will be looking for the development of comparative data across the Councils to assist the assessment of performance on issues such as service levels.

stuart.coppock@willoughby.nsw.gov.au ■




Get the Full Story

Who is working for you?
Your Insurer?
Your Agent?
Your Broker?

An **Insurance Broker** is the only **independent party** who can truly say that they work for **you** – the client.

Doesn't everyone need someone on their side? At **MGA Insurance Brokers**, we've got all your business needs covered.

Call TODAY for a quote.

8436 9200



WE WORK FOR YOU!

MGA Insurance Brokers Pty Ltd
Level 1, Suite 19, 401 Pacific Highway
Artarmon NSW 2064



Business and Residential storage available

20% OFF PACKAGING MATERIALS*

*Valid to 31 August 2010

Storage King

8 Frederick St, Artarmon

9436 1233

Email: artarmon3@storageking.com.au
Web: www.artarmonstorage.com.au



Great Coffee

Fresh Roasted Coffee

available from our roastery
18-20 Cleg Street
Artarmon

Call in between
8.30 am and 4.00 pm
Monday to Friday

T: 9966 8488
www.karmee.com

ARTARMON SIGN★A★RAMA

Specialising in

- ★ Vehicle graphics
- ★ Poster printing
- ★ Light Boxes
- ★ Building Signage
- ★ Promotional Banners

Phone for a free
site visit and quote

9437 1612

artarmon.signarama.com.au



St Vincent de Paul Society

good works

St. Vincent de Paul Society – St Ives Region has urgent need of good clean pre-loved clothing, bric-a-brac, white goods, furniture & good quality electrical items.



*We can arrange pick ups
5 days a week. Please
call us to arrange
for collection.*

Your Support Helps Us
To Help People Grow

Call Florence or Cathy @ Chatswood
on 9419 4236 or 9419 3599

FREE
same day
delivery to
RNS

PRICES
START FROM
\$30



Nappy Cakes

THE PRACTICAL BABY GIFT

- ◆ welcoming baby
- ◆ baby shower
- ◆ corporate gifts

9090 2064

www.zoeydeZigns.com



Artarmon Medical Centre has moved!

134 HAMPDEN ROAD ARTARMON 2064

We are delighted to announce that Dr Evelyn Ong has returned from maternity leave, and is now consulting on Wednesdays, Thursdays and Fridays, and we welcome Dr Elizabeth Nash and Dr Amca Slimovschi who have joined our practice.

- women's health
- men's health
- heart checks
- immunisation
- allergy treatment
- paediatrics

**Our new
location**
next to
the Lawn
Mower
shop near
the round-
about



**Our old
location**

We look forward to seeing all our regular patients
and welcoming new ones!

Phone 9411 5858 • 9419 8448

artarmon framing

15% OFF
STOCK frames
until 30 June when
you present this ad

Lynn & Bob Greaves

94a Reserve Road, Artarmon
Ph: 9439 9992 • Fax: 9436 0264
Open: 9 - 5 M to F • 10 - 2 Sat.

Looking For A Good Dentist on the North Shore?

(A Complete Family and Cosmetic Dentist - With That Gentle Touch...?)

Here's 8 Good Reasons to Call Us Today:

1. **Same day fast relief emergency Treatment.** We promise to be gentle and considerate and use the best of care and techniques to give you a pleasant and pain free experience every time. Happy Gas always available to help you relax.
2. **Extended hours** from 8am. Open *Saturday + Thursday nights* for your convenience - and we *won't keep you waiting.*
3. **White fillings and biocompatible,** durable ceramic restorations. Non drug headache treatments + Anti-snoring appliances also available.
4. **Complete family Dentistry.** Kids always welcomed. Check out our kids corner.
5. **Affordable Cosmetic and Implant Dentistry** - Easily improve your smile and enjoy strong and permanent, non removable teeth replacements that gives you immediate comfort and confidence with a natural smile and function.
6. **No More Loose and Sore Dentures** with One Visit Mini-Implants. Enjoy that apple or steak, today, and smile with real confidence again.
7. **Sleep Sedation Dentistry** by a qualified Anaesthetist using Intravenous Sedation or General Anaesthetic.
8. **Bad Breath Elimination Therapy** - Never be embarrassed again with these simple effective treatments.

Call Us Now On 9419-7484 For An Appointment.

www.ArtarmonFineDental.com
Suite 1, Level 1, 80 Hampden Rd Artarmon
(just above Commonwealth Bank)

Sunshine and Fun at the Fair!

by Michelle Sloane – APA President & Fair Coordinator

The sun shone brightly as the Artarmon community enjoyed the 2010 Fair!

The many faces of Artarmon were all there: our incredibly supportive local business community; our heritage; our hard-working community groups; our incredibly supportive Willoughby City Council; the Artarmon Public School and of course the absolutely tremendous Artarmon Progress Association Committee and friends. The teamwork exhibited on the day was phenomenal as so many people came together to make the day a tremendous success!

Uncle Max helped us remember the traditional owners of our land as he cleansed the Fair and us all – helping us to leave behind our troubles and begin something new!

An action packed program unfolded starting with the **Artarmon School Senior Band and Cowan Choir** followed by the action and excitement of **Anthony Ikin and IKIN Dance Studio** – who continued to energise and entertain us all day! **Adrian Saw** amazed us with his magical performance and **Star Search** showed us again how much talent we have in Artarmon and Willoughby!

Many thanks again to those of you who baked cakes, prepared jams and biscuits for **Noah's Ark Toy Library**; bought books and DVDs from the **Artarmon School P&C**; enjoyed some popcorn from the **Sea Scouts** or a fabulous sausage from the **APA/Baker's Delight Sausage Sizzle**. So many community groups benefited from your attendance and support which is one of the main aims of our Fair - to create a fundraising opportunity for these hard-working groups.

We worked hard and had a great day!

- The **Artarmon Public School** through sales at the Book/DVD stall raised around \$2225.00.
- The **Artarmon Public School Band** raised \$937 at the Gelato Stall.
- The **Noah's Ark Toy Library Cake Stall** raised over \$1605.00.
- The **Sea Scouts** raised around \$430.
- The **APA and Baker's Delight Sausage Sizzle** sold nearly 1,000 sausages and raised approximately \$1000. Some of this money will go towards the next Community Fair and some will go to help **Mat from Baker's Delight** as he raises funds for Breast Cancer research in the lead up to his big fundraising effort in 2011 – his ride to Melbourne!

Thanks also to Dominic, Angela and Mary from our **Artarmon Family Fruit Shop** for donating the mandarins and providing the onions and to **Steve from Artarmon Family Butcher** who provided the delicious sausages to sizzle!

The Fair would not have been possible without the support and engagement of **OUR LOCAL BUSINESS HEROES**. This year we had a tremendous level of support from the



The APA's Robert Newman and Michelle Sloane behind the scenes at the Fair

local business community with a substantial increase in the number of new sponsors.

Many many thanks to all our LOCAL BUSINESS Heroes! Without you this great community event would not be possible.

And finally, thanks to everyone who came along to enjoy all the many aspects of Artarmon at this biennial celebration of our great community!

High blood pressure: the silent killer

High blood pressure is often referred to as a 'silent killer' because most people don't feel any symptoms until it has caused considerable damage to their body. High blood pressure affects more than two million Australians and contributes to thousands of deaths every year.

Local GP, Dr Lynn Williams, said, "High blood pressure, also known as hypertension, increases your chances of developing serious health problems like stroke, heart attack, dementia and kidney disease. Given its silent nature, most people with high BP don't feel sick, so they don't realise they have a problem. Usually the only way of knowing there is a problem is by having your blood pressure checked by a health professional."



Angela Saraceno – Artarmon Fruit Shop

Angela Saraceno from Artarmon Fruit Shop knows all about the silent nature of high blood pressure. Angela is fit and young, eats plenty of fresh food and feels generally in tune with her body. However, Angela recently felt slightly unwell and decided it was worth having a check up, including a blood pressure check. To her surprise her blood pressure was high.

"I was quite shocked. I had been doing a lot of exercise in the heat and I was craving more salt on my food, which apparently may have been part of the problem. I only thought older people suffered high blood pressure but now I would recommend that my friends have a simple check up if this means preventing worse problems down the track, you just never know," Angela said.

Your doctor may recommend starting medicines to help reduce blood pressure, depending on your overall risk of cardiovascular disease. If you have other health conditions such as heart disease, diabetes or kidney disease your doctor may recommend you start treatment at a lower level of blood pressure.

For some people, like Angela, lifestyle changes such as reducing the amount of salt in their food are enough to reduce their blood pressure to normal levels. Exercising regularly, losing weight or quitting smoking can also assist in blood pressure reduction.

Even if you have no cause for concern, having your blood pressure checked is painless, quick and easy, and it might just save your life.

For more information about blood pressure, speak to your GP or download the latest edition of Medicines Talk at www.nps.org.au/consumers/publications/medicines_talk

This article was supplied by Northern Sydney General Practice Network, funded by the Australian Department of Health & Ageing and supported by the National Prescribing Service.

Talking 2064

Congratulations to **Nick and Bianca Logan** of Nick Logan Pharmacist Advice on the safe arrival of baby Luke on 28 March.

Station updates... the rubbish bin that appeared at the bottom of the station stairs some time ago is now in its permanent place - and useable! - on the station platform. And some commuters have discovered that the previous 'cash only' ticket window now has EFTPOS - great if you don't have enough cash, but maybe not so if you were used to this being the 'fast' queue on busy mornings!

The **Lane Cove Tunnel**, the subject of much angst and effort on the part of the APA and the community a number of years ago, has been bought for \$630m – well short of the \$1.1b it cost to build before sliding into receivership last year.

Artarmon and Lower North Shore residents turned out en masse to the Grand Opening of **Home HQ North Shore** on Saturday 27 March. Developer Charter Hall has transformed the former WCC works depot into a bulky goods retail centre.

real estate news



By **Wayne Marriott**, Principal, Home Traders Real Estate

Median Prices for Artarmon Units and Townhouses - 2000 to 2009 (\$000)

Year	Units			Townhouses	
	1br	2br	3br	2br	3br
2009	407	518	600	579	681
2008	380	494	653	547	680
2007	335	473	573	526	652
2006	375	430	520	520	631
2005	359	426	550	510	641
2004	340	425	550	466	585
2003	345	411	550	458	630
2002	312	407	506	430	595
2001	299	348	457	380	453
2000	260	320	400	332	405

E & OE This information in this table has been extracted and compiled using the records of the Valuer General's department and our sources. It is deemed reliable but is not guaranteed.

The table here shows the median sale price of Artarmon units and townhouses over the past ten years. Some of the figures are statistically unreliable (due to low numbers in particular samples) but there is still quite a lot of information that can be derived. The most common strata-title property in the vicinity is the two-bedroom unit, so that particular column is the most reliable. There has been an increase in the median price of this category in each of the ten years.

The median price is the most accurate way of analysing changes in house prices. It is defined as the middle value of the sample. ie. if 41 properties sell in the year, the median is the sale price of the 21st most expensive property; 20 are more expensive, 20 are less expensive.

An average can be skewed dramatically by one or two outlying results at the high or low end of the sample. Importantly, they don't skew the median value.

One myth that this analysis destroys is the adage 'prices always double every seven (or ten years). In fact, they rarely do, especially when one takes into account the money spent

on renovations and accepting that the 'average' house now is very different to those constructed in previous decades.

Regardless, real estate remains a safe and reliable investment, giving stability to the family and the wider community. It is also the foundation for the majority of citizens' prosperity in later life.

- > **Home Traders collects the most comprehensive and accurate data available to the general public.**
- > **To see the up to date details of properties sold in Artarmon and other suburbs in the vicinity, plus many suburb-statistics, go to our website (www.hometraders.com.au). You will find the information under the Market Information tab.**



hometraders

real estate

PART OF THE MARRIOTT  LANE GROUP OF COMPANIES

Property Sales and Management Artarmon • Chatswood • Lane Cove • Naremburn • Willoughby
www.hometraders.com.au • 110 Hampden Road, Artarmon NSW 2064 • 9411 7299